

We build a better future



■ Photo may include optional equipment

10/13/14/15/18BR-7 AC 20/25BR-7 AC

HYUNDAI REACH TRUCKS - Environmental-Friendly

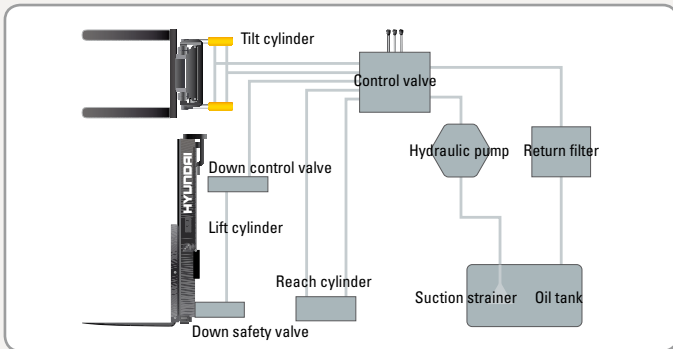
Superior Power & Optimal Performance

Smooth running, efficient and ergonomically designed, 10/13/14/15/20/25BR-7 series are built to meet your needs.



Excellent Grade-ability Operation

A powerful drive motor and four wheel configuration provides exceptional stability and excellent grade-ability.



State-of-the-art Hydraulic System

The latest large-capacity hydraulic system reacts quickly during operation and the low noise control valve increases both efficiency and durability.



Minimum Turning Radius

Compact design suitable for narrow aisle operation guarantees work efficiency and maximum space utilization.



Electric Power Steering (EPS)

EPS assures effortless steering allowing less fatigue to the operator. Machine performance and battery life are also enhanced.



Accelerator

The accelerator control provides the operator with precise and smooth directional control.



Versatile Reach Stroke

Multi-roller reach assembly provides a smooth, controlled and safe load handling system. Extended reach allows unsurpassed versatility.



Anti Roll Back

When restarting on a slope, an anti-roll back function ensures operational safety.



■ Photo may include optional equipment

High Technology ZAPI Controller

The efficient, almost noiseless, 8Khz (high frequency) ZAPI controller provides smooth quiet operation and protection for low & high voltage, overheating and fault recording.



Drive Motor & Pump Motor

Efficient "Schabmueller" AC motor guarantees reliability and optimized motor design provides low noise levels. Temperature sensor ensures long motor life.



■ Photo may include optional equipment



Self - diagnostic LCD Monitor

The LCD monitor has a back-light system to provide a clear view of the system's operation in all circumstances. The monitor provides information about operation error, system fault, battery level, hour meter plus other various functions.

Cup Holder, Console Box & Storage Space

Additional storage spaces are located inside the operating space for operator's convenience.



Comfortable Operation

A design based on human engineering relieves fatigue and increases operator's efficiency.



Newly Designed Steer Control Handle

A newly designed steering control coupled with our new Electric Power Steering control gives the operator exceptionally smooth and controlled steering for tight spaces.



New High Visibility for Safe Operation

The operator is able to work with increased safety and accuracy due to a wider mast view.



User Friendly Hydraulic Control

Minimal operator effort is required for precise, safe and productive control. As a standard layout is used, the reachtruck is easy to control.



Perfect Fit For Busy Operations

An ergonomically designed operator's compartment enables the driver to select the most comfortable working position for increased productivity.



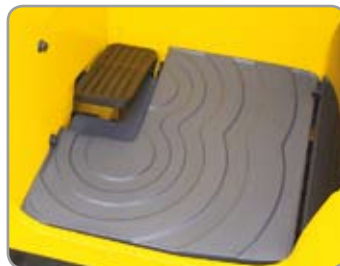
Strong Overhead Guard

The safety overhead guard meets EEC and ANSI regulations and protects the operator during hazardous work.



Operator's Compartment

A large plastic cushion is positioned for operator's safety and comfort.



Non Slip Floor Mat

A heavy, vibration dampening, non-slip floor mat reduces operator fatigue and allows for increased productivity.

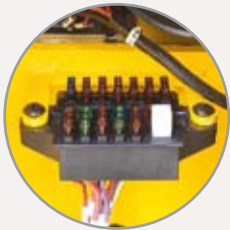


Brake Pedal

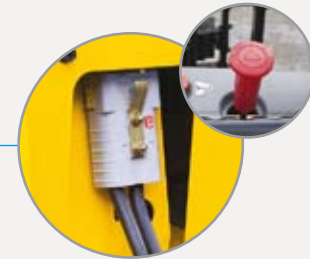
Smoother braking is assured by the balanced design of the pedal and maintenance costs are lowered as the cover is easily replaceable.

Durability & Easy Maintenance

An ideal arrangement of component parts ensures easy access and convenience for maintenance.



Concentrated Fuse Box for Easy Inspection



Battery Disconnect Lever & Emergency Switch



Disc Brake

Caliper disc brakes increase braking force. Maintenance costs are lowered by easy replaceable brake pad.



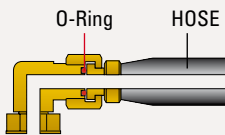
Reliable MOSFET Type Controller



EPS (Electric Power Steering) System



Easy Battery Replacement



ORFS (O-Ring Face Seal)
ORFS type hose prevents the leaking of hydraulic oil.



Hydraulic Oil Level Gauge



High Visibility Headlights & Rear Work Light



DC-DC Converter

DC-DC converter, satisfied with UL & CE, prevents from short circuit, overload and reverse polarity.

Mast Specifications (10BR-7 / 13BR-7)

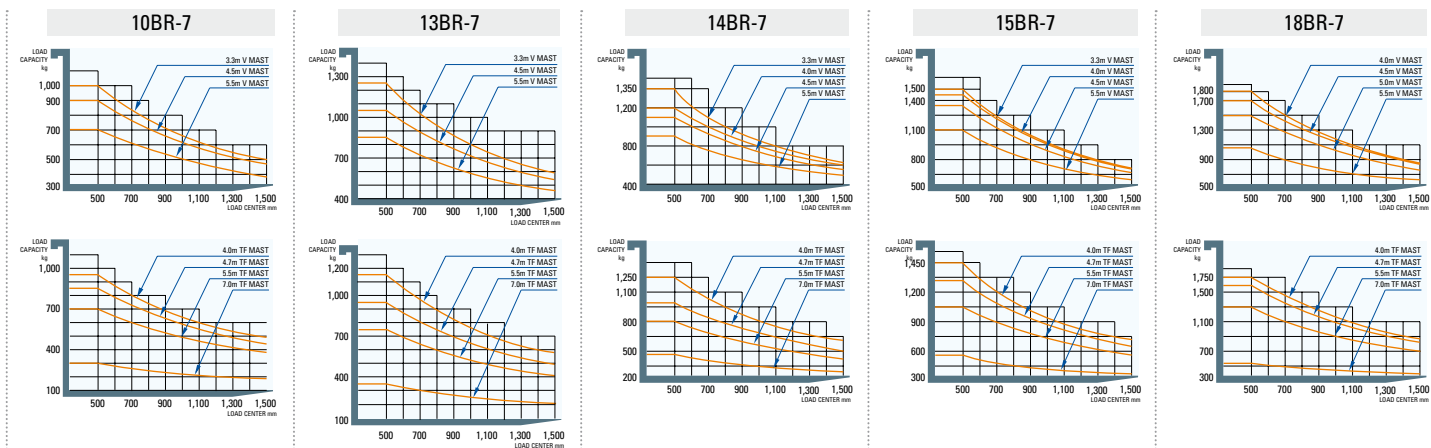
Mast Type	Maximum Fork Height (mm)	Overall Height (Lowered) (mm)	Overall Height (extended mast) (mm)		Free Lift Height (mm)		Tilt Angle (deg)		Load Capacity at 500 mm LC (kg)				Truck Weight (Unloaded) (kg)		
			With Load Backrest	Without Load Backrest	With Load Backrest	Without Load Backrest	Fwd	Bwd	Without Side Shift		With Side Shift		10BR-7	13BR-7	
			10/13BR-7	10/13BR-7	10/13BR-7	10/13BR-7	10/13BR-7	10/13BR-7	10BR-7	13BR-7	10BR-7	13BR-7			
2 / Stage Limited Free Lift	V250	2,525	1,741	3,525	3,035	357	357	3	5	1,000	1,250	1,000	1,250	2,144	2,189
	V270	2,725	1,841	3,725	3,235	357	357	3	5	1,000	1,250	1,000	1,250	2,154	2,200
	*V300	3,025	1,991	4,025	3,535	357	357	3	5	1,000	1,250	1,000	1,250	2,169	2,214
	V330	3,325	2,141	4,325	3,835	357	357	3	5	1,000	1,250	930	1,180	2,184	2,230
	V350	3,525	2,241	4,525	4,035	357	357	3	5	1,000	1,250	930	1,180	2,194	2,240
	V370	3,725	2,341	4,725	4,235	357	357	3	5	1,000	1,200	930	1,130	2,212	2,257
	V400	4,025	2,491	5,025	4,535	357	357	3	5	950	1,150	880	1,080	2,238	2,284
	V450	4,525	2,841	5,525	5,035	357	357	3	5	900	1,050	830	980	2,301	2,346
	V500	5,025	3,091	6,025	5,535	357	357	3	5	800	950	730	880	2,326	2,372
3 / Stage Full Free Lift	V550	5,525	3,341	6,525	6,035	357	357	3	5	700	850	630	780	2,351	2,397
	TF370	3,735	1,806	4,742	4,241	799	1,335	3	5	1,000	1,200	930	1,130	2,326	2,369
	TF400	4,035	1,906	5,042	4,541	899	1,435	3	5	950	1,150	880	1,080	2,347	2,390
	TF430	4,335	2,006	5,342	4,841	999	1,535	3	5	900	1,100	830	1,030	2,368	2,411
	TF450	4,535	2,106	5,542	5,041	1,099	1,635	3	5	900	1,000	830	930	2,387	2,429
	TF470	4,735	2,156	5,742	5,241	1,149	1,685	3	5	850	950	780	880	2,398	2,441
	TF500	5,035	2,256	6,042	5,541	1,249	1,785	3	5	850	900	780	830	2,419	2,462
	TF550	5,535	2,456	6,542	6,041	1,449	1,985	3	5	700	750	630	680	2,482	2,524
	TF600	6,035	2,656	7,042	6,541	1,649	2,185	3	5	600	650	530	580	2,520	2,563
	TF650	6,535	2,856	7,542	7,041	1,849	2,385	3	5	500	550	430	480	2,560	2,603
TF700	7,035	3,056	8,042	7,541	2,049	2,585	3	5	300	350	230	280	2,589	2,632	

Mast Specifications (14BR-7 / 15BR-7 / 18BR-7)

Mast Type	Maximum Fork Height (mm)	Overall Height (Lowered) (mm)	Overall Height (extended mast) (mm)		Free Lift Height (mm)		Tilt Angle (deg)		Load Capacity at 500 mm LC (kg)						Truck Weight (Unloaded) (kg)			
			With Load Backrest	Without Load Backrest	With Load Backrest	Without Load Backrest	Fwd	Bwd	Without Side Shift			With Side Shift			14BR-7	15BR-7	18BR-7	
			14/15/18BR-7	14/15/18BR-7	14/15/18BR-7	14/15/18BR-7	14/15/18BR-7	14/15/18BR-7	14BR-7	15BR-7	18BR-7	14BR-7	15BR-7	18BR-7				
2 / Stage Limited Free Lift	V250	2,525	1,741	3,525	3,035	357	357	3	5	1,350	1,500	1,800	1,350	1,500	1,800	2,214	2,360	2,402
	V270	2,725	1,841	3,725	3,235	357	357	3	5	1,350	1,500	1,800	1,350	1,500	1,800	2,224	2,370	2,412
	*V300	3,025	1,991	4,025	3,535	357	357	3	5	1,350	1,500	1,800	1,350	1,500	1,800	2,239	2,385	2,427
	V330	3,325	2,141	4,325	3,835	357	357	3	5	1,350	1,500	1,800	1,280	1,430	1,730	2,255	2,400	2,443
	V350	3,525	2,241	4,525	4,035	357	357	3	5	1,300	1,500	1,800	1,230	1,430	1,730	2,265	2,410	2,453
	V370	3,725	2,341	4,725	4,235	357	357	3	5	1,250	1,500	1,800	1,180	1,430	1,730	2,282	2,427	2,470
	V400	4,025	2,491	5,025	4,535	357	357	3	5	1,200	1,450	1,800	1,130	1,380	1,730	2,318	2,464	2,506
	V450	4,525	2,841	5,525	5,035	357	357	3	5	1,100	1,350	1,700	1,030	1,280	1,630	2,381	2,526	2,569
	V500	5,025	3,091	6,025	5,535	357	357	3	5	1,000	1,250	1,500	930	1,180	1,430	2,406	2,552	2,594
3 / Stage Full Free Lift	V550	5,525	3,341	6,525	6,035	357	357	3	5	900	1,100	1,050	830	1,030	980	2,431	2,577	2,619
	TF370	3,735	1,806	4,742	4,241	799	1,335	3	5	1,300	1,500	1,800	1,230	1,430	1,730	2,415	2,561	2,603
	TF400	4,035	1,906	5,042	4,541	899	1,435	3	5	1,250	1,450	1,750	1,180	1,380	1,680	2,436	2,582	2,624
	TF430	4,335	2,006	5,342	4,841	999	1,535	3	5	1,150	1,400	1,700	1,080	1,330	1,630	2,457	2,603	2,645
	TF450	4,535	2,106	5,542	5,041	1,099	1,635	3	5	1,100	1,350	1,650	1,030	1,280	1,580	2,476	2,621	2,663
	TF470	4,735	2,156	5,742	5,241	1,149	1,685	3	5	1,000	1,300	1,600	930	1,230	1,530	2,487	2,633	2,675
	TF500	5,035	2,256	6,042	5,541	1,249	1,785	3	5	950	1,200	1,550	880	1,130	1,480	2,508	2,654	2,696
	TF550	5,535	2,456	6,542	6,041	1,449	1,985	3	5	800	1,050	1,300	730	980	1,230	2,573	2,719	2,761
	TF600	6,035	2,656	7,042	6,541	1,649	2,185	3	5	700	900	1,050	630	830	980	2,612	2,758	2,800
	TF650	6,535	2,856	7,542	7,041	1,849	2,385	3	5	600	750	800	530	680	730	2,652	2,797	2,840
TF700	7,035	3,056	8,042	7,541	2,049	2,585	3	5	450	550	550	380	480	480	2,681	2,827	2,869	

*STANDARD

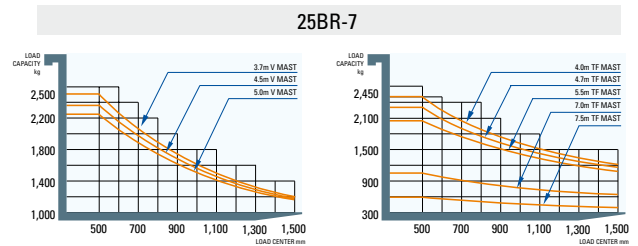
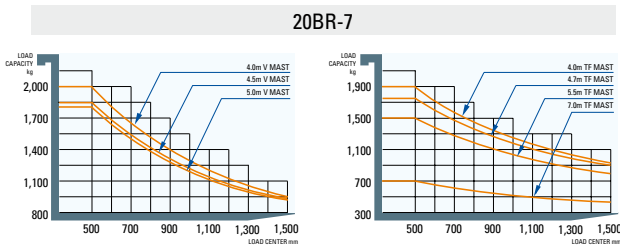
Load Capacity



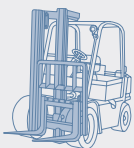
Mast Specifications (20BR-7 / 25BR-7)

Mast Type	Maximum Fork Height (mm)		Overall Height (Lowered) (mm)				Overall Height (extended mast) (mm)				Free Lift Height (mm)				Tilt Angle (deg)		Load Capacity at 500mm LC (kg)				Truck Weight (Unloaded) (kg)	
					With Load Backrest		Without Load Backrest		With Load Backrest		Without Load Backrest		Fwd	Bwd	Without Side Shift		With Side Shift					
	20BR-7	25B-7	20BR-7	25B-7	20BR-7	25B-7	20BR-7	25B-7	20BR-7	25B-7	20BR-7	25B-7	20/25BR-7	20BR-7	25BR-7	20BR-7	25BR-7	20BR-7	25BR-7			
2 / Stage Limited Free Lift	V250	2,505	2,505	1,775	1,775	3,530	3,530	2,970	2,970	415	415	415	415	3	5	2,000	2,500	2,000	2,500	2,706	2,893	
	V270	2,705	2,705	1,875	1,875	3,730	3,730	3,170	3,170	415	415	415	415	3	5	2,000	2,500	2,000	2,500	2,719	2,906	
	*V300	3,005	3,005	2,025	2,025	4,030	4,030	3,470	3,470	415	415	415	415	3	5	2,000	2,500	2,000	2,500	2,738	2,926	
	V330	3,305	3,305	2,175	2,175	4,330	4,330	3,770	3,770	415	415	415	415	3	5	2,000	2,500	1,920	2,420	2,757	2,945	
	V350	3,505	3,505	2,275	2,275	4,530	4,530	3,970	3,970	415	415	415	415	3	5	2,000	2,500	1,920	2,420	2,770	2,957	
	V370	3,705	3,705	2,425	2,425	4,730	4,730	3,910	3,910	415	415	415	415	3	5	2,000	2,500	1,920	2,420	2,789	2,976	
	V400	4,005	4,005	2,575	2,575	5,030	5,030	4,470	4,470	415	415	415	415	3	5	2,000	2,500	1,920	2,420	2,822	3,009	
	V430	4,305	4,305	2,725	2,725	5,330	5,330	4,770	4,770	415	415	415	415	3	5	1,950	2,400	1,870	2,320	2,871	3,058	
	V450	4,505	4,505	2,875	2,875	5,530	5,530	4,970	4,970	415	415	415	415	3	5	1,850	2,350	1,770	2,270	2,898	3,085	
	V470	4,705	4,705	2,975	2,975	5,730	5,730	5,170	5,170	415	415	415	415	3	5	1,850	2,300	1,770	2,220	2,910	3,097	
V500	5,005	5,005	3,125	3,125	6,030	6,030	5,470	5,470	415	415	415	415	3	5	1,800	2,250	1,720	2,170	2,929	3,116		
3 / Stage Full Free Lift	TF370	3,705	3,705	1,825	1,825	5,730	5,730	4,358	4,358	800	800	1,172	1,172	3	5	2,000	2,500	1,920	2,420	3,041	3,228	
	TF400	4,005	4,005	1,925	1,925	5,030	5,030	4,658	4,658	900	900	1,272	1,272	3	5	1,900	2,450	1,820	2,370	3,061	3,248	
	TF430	4,305	4,305	2,025	2,025	5,330	5,330	4,958	4,958	1,000	1,000	1,372	1,372	3	5	1,850	2,350	1,770	2,270	3,082	3,269	
	TF450	4,505	4,505	2,125	2,125	5,530	5,530	5,158	5,158	1,100	1,100	1,472	1,472	3	5	1,800	2,350	1,720	2,270	3,100	3,287	
	TF470	4,705	4,705	2,175	2,175	5,730	5,730	5,358	5,358	1,150	1,150	1,522	1,522	3	5	1,750	2,300	1,670	2,220	3,110	3,298	
	TF500	5,005	5,005	2,275	2,275	6,030	6,030	5,658	5,658	1,250	1,250	1,622	1,622	3	5	1,700	2,200	1,620	2,120	3,129	3,317	
	TF550	5,505	5,505	2,475	2,475	6,530	6,530	6,158	6,158	1,450	1,450	1,822	1,822	3	5	1,500	2,050	1,420	1,970	3,210	3,398	
	TF600	6,005	6,005	2,675	2,675	7,030	7,030	6,658	6,658	1,650	1,650	2,022	2,022	3	5	1,300	1,950	1,220	1,870	3,249	3,437	
	TF650	6,505	6,505	2,875	2,875	7,530	7,530	7,158	7,158	1,850	1,850	2,222	2,222	3	5	1,150	1,450	1,070	1,370	3,289	3,477	
	TF700	7,005	7,005	3,075	3,075	8,030	8,030	7,658	7,658	2,050	2,050	2,422	2,422	3	5	700	1,050	620	970	3,327	3,515	
TF750	-	7,505	-	3,225	-	8,530	-	8,158	-	2,200	-	2,572	3	5	-	600	-	520	-	3,555		

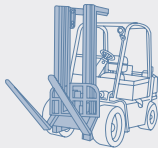
Load Capacity



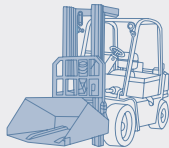
Various Attachments



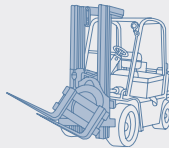
Side Shift



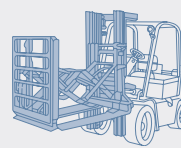
Hinged Forks



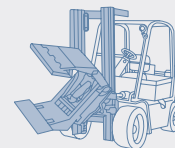
Hinged Bucket



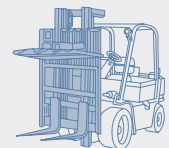
Rotating Forks



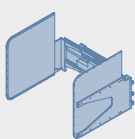
Push Pull



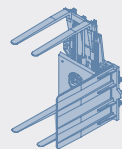
Rotating Roll Clamp



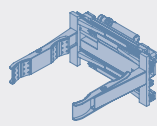
Load Stabilizer



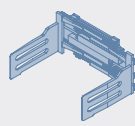
Carton Clamp



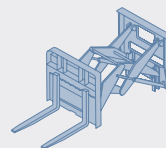
Pallet Invert



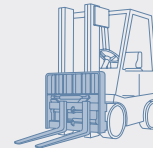
Drum Clamp



Bale Clamp



Load Extender



Fork Positioner

Optional Items

MASTS

(V-Mast)
 10/13/14/15/18BR-7 : V250, V270, V330, V350, V370, V400, V450, V500, V550
 20/25BR-7 : V250, V270, V330, V350, V370, V400, V430, V450, V470, V500
 (TF-Mast)
 10/13/14/15/18/20BR-7 : TF370, TF400, TF430, TF450, TF470, TF500, TF550, TF600, TF650, TF700
 25BR-7 : TF370, TF400, TF430, TF450, TF470, TF500, TF550, TF600, TF650, TF700, TF750

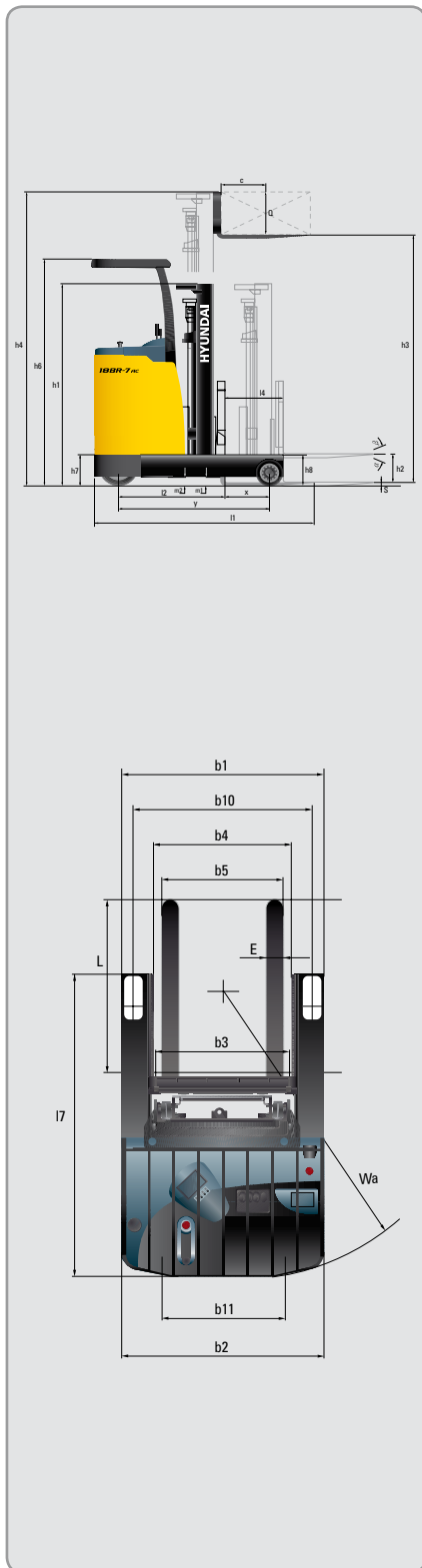
FORKS

10/13/14/15/18BR-7 : 750 / 850 / 1,050 / 1,200 / 1,350 / 1,500
 20/25BR-7 : 900 / 1,000 / 1,200 / 1,350 / 1,500 / 1,650 / 1,800
TIRES
 10/13/14/15/18BR-7
 OPTION1 : All Urethane
 OPTION2 : All Rubber
 20/25BR-7
 OPTION1 : All Urethane

Side Shift

• **Steering** : Reverse
 • **Frame(TF-Mast)** : Wide
 • **MCV** : 4-SPOOL
 • **Lever Arrange** : A,R,T,L
 • **Beacon Lamp (Color : Amber / Red / Blue)**
COLD STORAGE

Dimensions



Specifications

■ Identification

		HYUNDAI	HYUNDAI	HYUNDAI	HYUNDAI	HYUNDAI	HYUNDAI	HYUNDAI	
1.1	Manufacturer	HYUNDAI	HYUNDAI	HYUNDAI	HYUNDAI	HYUNDAI	HYUNDAI	HYUNDAI	
1.2	Type	10BR-7	13BR-7	14BR-7	15BR-7	18BR-7	20BR-7	25BR-7	
1.3	Drive: electric (battery or mains), diesel, petrol, fuel gas, manual	electric	electric	electric	electric	electric	electric	electric	
1.4	Type of operation: hand, pedestrian, standing, seated, order-picker	standing	standing	standing	standing	standing	standing	standing	
1.5	Load capacity (standard)	Q (t)	1	1.25	1.35	1.5	1.8	2	2.5
1.6	Load center distance	c (mm)	500	500	500	500	500	500	
1.8	Load distance, center of Load wheels to forks	x (mm)	150	185	275	305	490	417	617
1.9	Wheelbase	y (mm)	1,115	1,150	1,250	1,315	1,500	1,500	1,700

■ Weights

		kg	2,169	2,214	2,240	2,385	2,427	2,738	2,926
2.1	Service weight	kg	2,169	2,214	2,240	2,385	2,427	2,738	2,926
2.3	Axle loading, reached in, unloaded front / rear	kg	1,373 / 796	1,426 / 788	1,430 / 810	1,543 / 842	1,659 / 768	948 / 1,791	2,011 / 915
2.4	Axle loading, reached out, loaded front / rear	kg	578 / 2,591	488 / 2,976	476 / 3,114	544 / 3,341	571 / 3,656	561 / 4,177	633 / 4,793
2.5	Axle loading, reached in, loaded front / rear	kg	1,059 / 2,110	1,084 / 2,381	1,187 / 2,402	1,321 / 2,564	1,647 / 2,580	1,680 / 3,058	2,183 / 3,243

■ Wheels, Chassis

		P-Ure/Rub/Rub	P-Ure/Rub/Rub	P-Ure/Rub/Rub	P-Ure/Rub/Rub	P-Ure/Rub/Rub	P-Ure/Rub/Rub	P-Ure/Rub/Rub
3.1	Tires: solid rubber, superelastic, pneumatic, polyurethane (Load / Drive / Castor)	P-Ure/Rub/Rub	P-Ure/Rub/Rub	P-Ure/Rub/Rub	P-Ure/Rub/Rub	P-Ure/Rub/Rub	P-Ure/Rub/Rub	P-Ure/Rub/Rub
3.2	Tires size, rear (Ø x width)	254 x 100	254 x 100	254 x 100	254 x 100	254 x 100	267 x 114	267 x 114
3.3	Tires size, front (Ø x width)	305 x 145	305 x 145	305 x 145	305 x 145	305 x 145	382 x 142	382 x 142
3.4	Tires size, castor (Ø x width)	178 x 73	178 x 73	178 x 73	178 x 73	178 x 73	204 x 76	204 x 76
3.5	Wheels, number : load x drive (driven wheel) x castor	2 x 1 x 2	2 x 1 x 2	2 x 1 x 2	2 x 1 x 2	2 x 1 x 2	2 x 1 x 2	2 x 1 x 2
3.6	Track width, rear	b10 (mm)	970	970	970	970	1,060	1,060
3.7	Track width, front	b11 (mm)	650	650	650	650	730	730

■ Basic Dimensions

		degrees	3 / 5	3 / 5	3 / 5	3 / 5	3 / 5	3 / 5	3 / 5
4.1	Mast / fork carriage tilt forward / backward	degrees	3 / 5	3 / 5	3 / 5	3 / 5	3 / 5	3 / 5	3 / 5
4.2	Lowered mast height (standard)	h1 (mm)	1,991	1,991	1,991	1,991	1,991	2,025	2,025
4.3	Free lift	h2 (mm)	357	357	357	357	357	415	415
4.4	Lift height (standard)	h3 (mm)	3,000	3,000	3,000	3,000	3,000	3,000	3,000
4.5	Extended mast height (standard)	h4 (mm)	4,025	4,025	4,025	4,025	4,025	4,030	4,030
4.7	Overhead load guard (cab) height	h6 (mm)	2,260	2,260	2,260	2,260	2,260	2,296	2,296
4.8	Seat height / standing height	h7 (mm)	324	324	324	324	324	345	345
4.19	Overall length (reached in, std. forks)	l1 (mm)	2,110	2,110	2,120	2,155	2,155	2,373	2,373
4.20	Length to face of forks (reached in)	l2 (mm)	1,210	1,210	1,220	1,255	1,255	1,323	1,323
4.21	Overall width (rear / front)	b1/b2 (mm)	1,070 / 1,070	1,070 / 1,070	1,070 / 1,070	1,070 / 1,070	1,070 / 1,070	1,200 / 1,200	1,200 / 1,200
4.22	Fork dimensions (hook type) L x W x T	s/e/l (mm)	900x100x35	900x100x35	900x100x35	900x100x35	900x100x35	1,050x100x45	1,050x100x45
4.23	Fork carriage ISO 2328, class / type A,B	II, A	II, A	II, A	II, A	II, A	II, A	II, A	II, A
4.24	Fork carriage width	b3 (mm)	1,019	1,019	1,019	1,019	1,019	1,092	1,092
4.25	Width over forks	b5 (mm)	734	734	734	734	734	722	722
4.26	Distance between supporting legs	b4 (mm)	773	773	771	771	771	837	837
4.28	Reach stroke	l4 (mm)	330	365	450	480	665	607	807
4.31	Ground clearance, loaded, under mast	m1 (mm)	106	106	106	106	106	130	130
4.32	Ground clearance, centre of wheelbase	m2 (mm)	85	85	70	70	70	77	77
4.33	Aisle width for pallets 1000 x 1200 crossways (L x W)	Ast (mm)	2,665	2,672	2,686	2,723	2,762	2,827	2,897
4.34	Aisle width for pallets 800 x 1200 lengthways (W x L)	Ast (mm)	2,749	2,751	2,753	2,785	2,790	2,869	2,892
4.35	Turning radius	Wa (mm)	1,425	1,460	1,545	1,605	1,775	1,790	1,985
4.37	Overall length (without forks)	l7 (mm)	1,495	1,495	1,630	1,630	1,880	1,880	2,080

■ Performance Data

		km/h	11.5	11.5	11	11	11	12	12
5.1	Travel speed, unloaded	km/h	11.5	11.5	11	11	11	12	12
5.2	Lift speed, loaded / unloaded	m/s	320 / 500	320 / 500	350 / 550	340 / 550	320 / 550	300 / 470	280 / 470
5.3	Lowering speed, loaded / unloaded	m/s	500 / 450	500 / 450	500 / 450	500 / 450	500 / 450	500 / 450	500 / 450
5.7	Gradient performance, loaded/unloaded	%	21 / 18	18 / 19	30 / 16	29 / 16	26 / 15	18 / 16	16 / 15
5.9	Acceleration time (10m), loaded / unloaded	sec	-	-	5.5	5.6	5.9	5.1	5.3
5.10	Service brake		DISC	DISC	DISC	DISC	DISC	DISC	DISC

■ E-Motor

		kW	4.4	4.4	6.8	6.8	6.8	6.8	6.8
6.1	Drive motor rating S2 60min (80V)	kW	4.4	4.4	6.8	6.8	6.8	6.8	6.8
6.2	Pump motor rating S3-15% (80V)	kW	15.8	15.8	15.8	15.8	15.8	15.8	15.8
6.3	Battery acc. to DIN 43531/ 35/ 36 A, B, C, no	no	no	no	no	no	no	no	no
6.4	Battery Voltage, nominal capacity K5 (80V)	V/Ah	48 / 225	48 / 225	48 / 230	48 / 280	48 / 300	48 / 335	48 / 335
6.5	Battery Weight (min)	kg	380	380	400	480	500	560	560
	Battery compartment dimensions (L/W/H)	mm	994x270x582	994x270x582	994x300x582	994x378x582	994x378x582	994x378x582	994x378x582

■ Other Details

		FET Inverter	FET Inverter	FET Inverter	FET Inverter	FET Inverter	FET Inverter	FET Inverter
8.1	Type of drive control	FET Inverter	FET Inverter	FET Inverter	FET Inverter	FET Inverter	FET Inverter	FET Inverter
8.2	Operating pressure (attachments)	bar	130	130	130	130	130	130
8.3	Hydraulic oil flow (attachments)	ℓ/min	18	18	18	18	18	24

Specifications are based on information available at time of printing and may change without notice.

Notes

A series of horizontal dotted lines for writing notes.



Head Office (Sales Office)

1 JEONHA-DONG, DONG-GU, ULSAN, KOREA TEL: (82) 52-202-7970, 7729, 0971 FAX: (82) 52-202-7979, 7720

U.S. Operation: Hyundai Construction Equipment U.S.A., Inc.

955 ESTES AVENUE, ELK GROVE VILLAGE, IL. 60007, U.S.A. TEL: (1) 847-437-3333 FAX: (1) 847-437-3574

European Operation: Hyundai Heavy Industries Europe N.V.

VOSSENDAAL 11, 2440 GEEL, BELGIUM TEL: (32) 14-56-2200 FAX: (32) 14-59-3405

India Operation: Hyundai Construction Equipment India Pvt., Ltd.

PLOT NO.A-2, CHAKAN INDUSTRIAL AREA, VILL.- KHALUMBRE. TALUK.- KHED., DIST.- PUNE 410 501, INDIA
TEL: (91) 21-3530-1700 FAX: (91) 21-3530-1712

PLEASE CONTACT